



## **OrgPlus Enterprise 3.0 Installation Prerequisites**

Before installing the OrgPlus Enterprise software, make sure that all of the required operating system and database components are properly installed. This document addresses verification, installation, and configuration of all of the prerequisite software components necessary for a successful deployment of OrgPlus Enterprise. The intended audience is system / database administrators intending to install both the supporting software and the OrgPlus Enterprise application.

### **Overview:**

Section 1: Install IIS 6.0 or Later

Section 2: Install Microsoft .NET Framework 2.0 or Later

Section 3: Install Microsoft SQL Server 2000 or Later

Section 4: Download and Install OrgPlus Enterprise 3.0

Section 5: Access the Admin page

### **Section 1: Install IIS 6.0 or Later**

Windows 2003 Server is the only operating system supported by OrgPlus Enterprise 3.0, and it is delivered with IIS 6.0 installed.

To determine whether IIS is installed on your machine, open a browser and go to: <http://localhost/>. If IIS is installed, a browser window will inform you that your web service is running. If this notice does not appear, IIS is either not running or is installed on a port other than 80.

If IIS 6.0 is installed, skip to [Section 2](#).

#### **To install IIS:**

1. Open the Control Panel and select **Add or Remove Programs**.
2. Click Add/Remove Windows Components (left side).
3. Select the applicable component for your system.
4. Select the **Application Server** checkbox and click the **Details...** button. Then ensure the following components are checked:

- Application Server Console
  - ASP.NET
  - Internet Information Services (IIS)
5. Click **Next** and follow the on-screen instructions to complete the installation.
  6. Restart your computer, if required.

Determine that your server is up and running by opening Internet Explorer to <http://localhost>.

**Note:** you must be running Internet Explorer version 6.0 or later. To determine your version of IE, select **About Internet Explorer** from the **Help** menu.

## Section 2: Install Microsoft .NET Framework 2.0

OrgPlus Enterprise requires Microsoft .NET Framework 2.0 or later.

Determine that the correct .NET Framework is installed

- Open the Control Panel and select **Add or Remove Programs**.
- If Microsoft .NET Framework 2.0 is present, skip to section 3.

To download Microsoft .NET Framework 2.0.x:

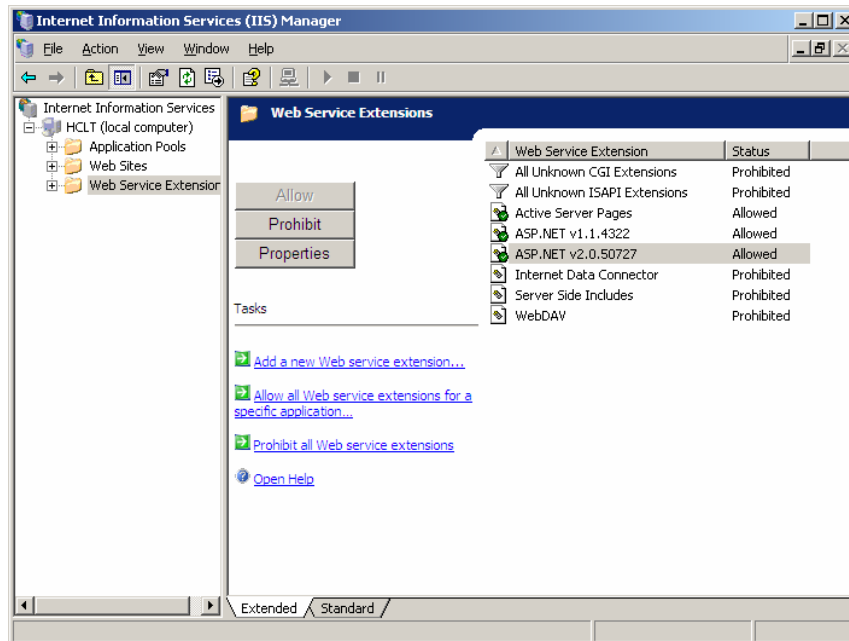
- **x32-bit server:**
- Download <http://www.microsoft.com/downloads/details.aspx?familyid=0856eacb-4362-4b0d-8edd-aab15c5e04f5&displaylang=en>
- Save the application and run the installer.

### **x64-bit server:**

- Download <http://www.microsoft.com/downloads/details.aspx?familyid=B44A0000-ACF8-4FA1-AFFB-40E78D788B00&displaylang=en>
- Save the application and run the installer.
- Enter the following from the Command Prompt:
- C:\Windows\Microsoft.NET\Framework\v2.0.50727\aspnet\_regiis -i
- C:\iisreset

For IIS 6.0 ensure that ASP.NET 2.0 is enabled:

- Select Start > Programs > Administrative Tools > Internet Information Services.
- Select the Web Service Extensions in the navigation tree.
- Verify that ASP.NET v2.0 is set to *Allowed*.



### Register the Correct User in the RSA Key Container

OrgPlus enterprise stores the application database connection information in the web.config file, which is located in the root of the IIS directory where the application is installed. This connection information is encrypted using components provided by the .NET 2.0 Framework including a key that is stored within a container that can be accessed only by a registered OrgPlus user. If the OrgPlus Enterprise user does not have access to this container, you will encounter the following exception when trying to install OrgPlus Enterprise:

**“Parser Error Message:** Failed to decrypt using provider 'RsaProtectedConfigurationProvider'.”

To avoid this problem, run the following commands:

```
C:\WINDOWS\Microsoft.NET\Framework\v2.0.50727\aspnet_regiis -pa
"NetFrameworkConfigurationKey" "ASPNET"
```

```
C:\WINDOWS\Microsoft.NET\Framework\v2.0.50727\aspnet_regiis -pa
"NetFrameworkConfigurationKey" "NT Authority\Network Service"
```

If the commands run successfully you will see the following output:

```
Adding ACL for access to the RSA Key container...
Succeeded
```

For more information please reference MSDN article <http://msdn2.microsoft.com/en-us/library/ms998283.aspx>

### Section 3: Install MS SQL Server 2000 or Later

The OrgPlus Enterprise application database (where OrgPlus Enterprise stores user preferences and administrative configurations) must be SQL Server 2000 or SQL Server 2005. The application database is relatively small and should not require more than 5 GB of free disk space.

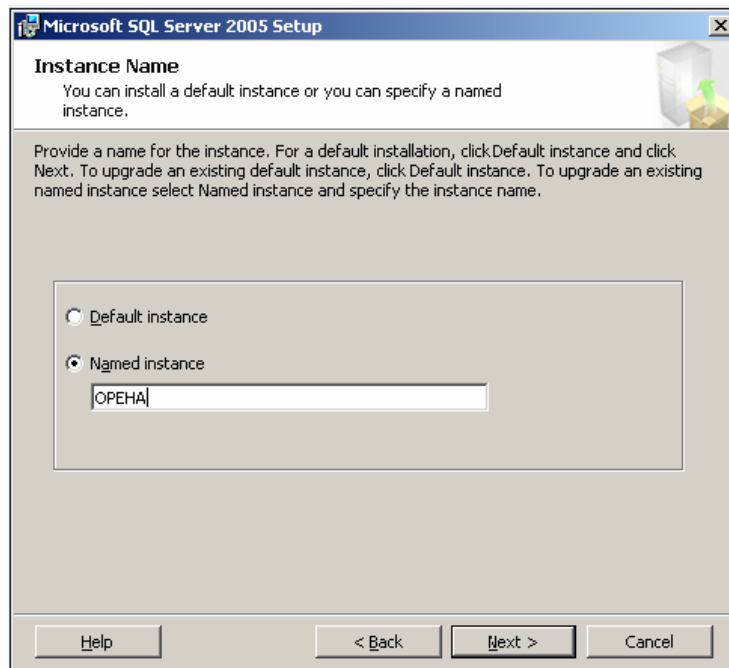
You can run OrgPlus Enterprise on either a x32-bit or x64-bit SQL Server implementation, whether local (on the OrgPlus Enterprise server) or remote. OrgPlus Enterprise can share its database with other applications.

#### Install and run SQL Server 2005

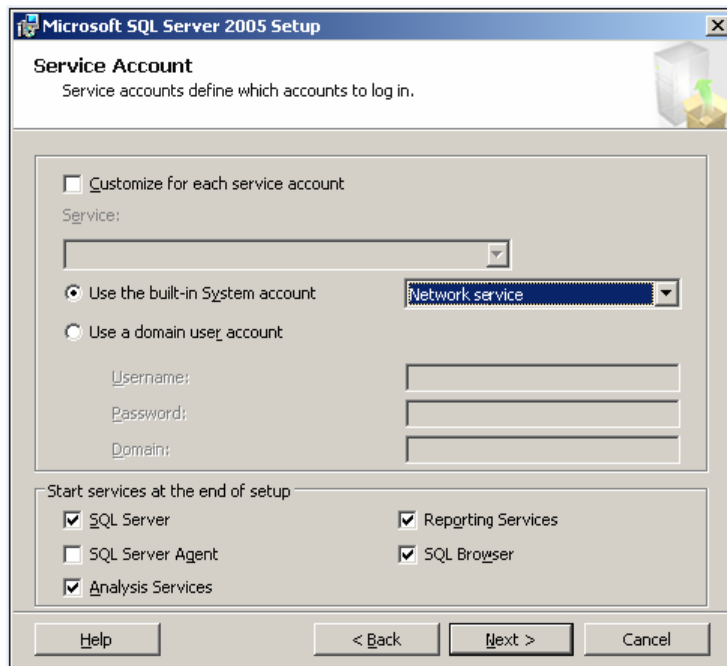
**Note:** This document provides an example for installing SQL Server 2005. For information about all other versions, please refer to the documentation available from Microsoft.com.

#### To install SQL Server 2005

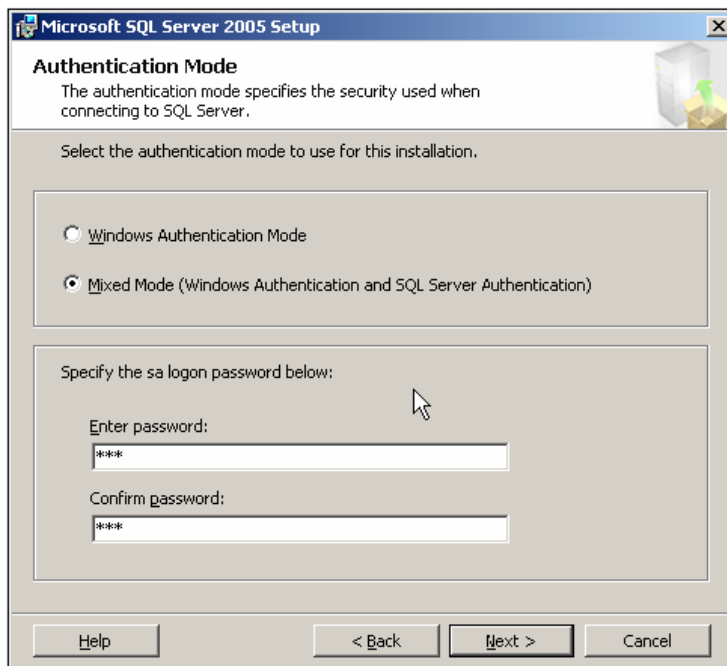
1. Double click the **Setup.exe**.



2. Select the **Named instance** radio button and enter a name for your instance.
3. Click **Next**.



4. Accept the default **Use the built-in System account** setting and click **Next**.



5. Select the **Mixed Mode** radio button, then enter and confirm a password.  
**Note:** This step is extremely important.
6. Click **Next** until the installation is complete.

## Section 4: Download and Install OrgPlus Enterprise

1. Download the latest OrgPlus Enterprise build from:  
<http://download.humanconcepts.com/downloads/ope3/orgplusenterpriseha3full.exe>
2. Double-click **orgplusenterpriseha3full.exe** to begin installation.

**Note:** Refer to Chapter 3 of the [OrgPlus Enterprise Administrator Guide](#) for installation and upgrade instructions.

**Note:** When installing OrgPlus Enterprise, you must provide values specified during the SQL Server installation process. Enter these values at the OrgPlus Enterprise Database Installation Details page.

**Note:** If you have SQL Server 2005 deployed on Windows 2003 Server, the Windows Password Policy is by default turned on for all SQL Server users. Therefore, in order to create a user directly in SQL Server or via the connection string during OPE installation, you have to follow these password guidelines:

- Not contain all or part of the user's account name
- Be at least six characters in length
- Contain characters from three of the following four categories:
  - English uppercase characters (A through Z)
  - English lowercase characters (a through z)
  - Base 10 digits (0 through 9)
  - Non alphanumeric characters (e.g., !, \$, #, %)

**Note:** The Password Policy Setting is under Local Security Settings>Account Policies>Password Policy.

## **Section 5: Access the Admin page**

In Internet Explorer, navigate to: <http://localhost/OPEHA/Default.aspx>.

**Note:** If this URL does not work, replace **localhost** with the hostname of your machine.

Enter the following default sign in settings:

**User Name:** *root*

**Password:** *root*

**Note:** If you see pure HTML code and a Page Not Found error, you may need to repair your IIS mappings to display .aspx pages correctly. Please refer to the following article: <http://support.microsoft.com/default.aspx?scid=kb;en-us;306005>

Click the Admin icon to display the OrgPlus Enterprise Admin interface. You must enter your license key to enable end users to access OrgPlus Enterprise. See the [OrgPlus Enterprise Administrator Guide](#) for additional information.